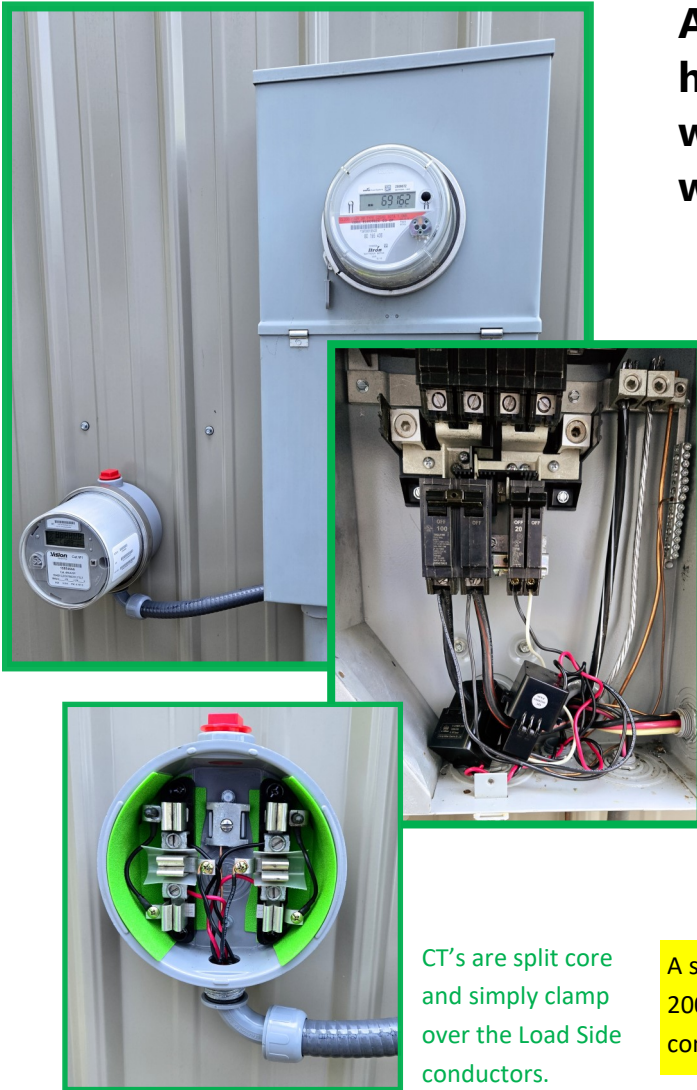


Sub-Metering Kits

This installation must be done by a Licensed Electrician.



A complete kit for submetering your home, pool, outbuildings, offices, warehouses or any individual service where submetering is desired.

Vision Metering offers sub metering kits for all types of installations. This installation is on a 200 amp residential service. The installation consists of a 6 terminal round meter socket, 2- 200:5 current transformers and a Vision 4S meter. You can order meters with or without communications. This installation took 1 1/2 hours. Meters are available to read directly or to be read via modem through an App on Android or Apple devices.

The accuracy of the installation is better than 0.5% including meter and CT's. The accuracy of the meter is better than 0.2%

CT's are split core and simply clamp over the Load Side conductors.

A singlephase installation kit includes the form 4S meter socket, two 200:5 CT's and a Vision form 4S meter with or without communications.

The meter socket has shunting devices to short the CT's when the meter is removed from the socket.

Communicating and non-communicating meters

Sub-metering kits are available with and without communications. Dumb meters (non-communicating) can only be read via the display or through the optical port. Communicating meters have a Cat M1 modem meter which operates on T-Mobile and AT&T as roaming. Communicating meters are sold with 15 years of data loaded into them. These meters can be read through an App which is available on Apple and Android devices. Reading these meters with an App costs \$3.00 per month per meter. Billing options are also available to bill customers where these meters are installed.



Kit Part Numbers

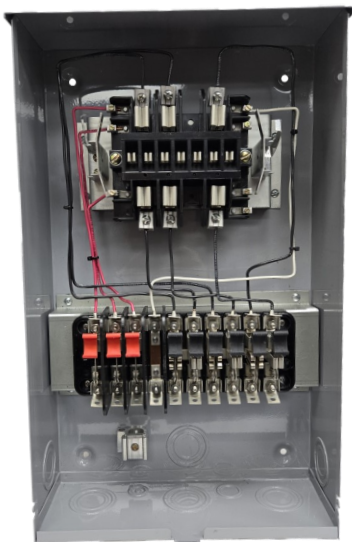
VM-SMK-4S	Residential Form 2S/4S with round 4S meter socket and no communications
VM-SMK-4S-MC	Residential Form 2S/4S with round 4S meter socket, cell modem and 15 years of data
VM-SMK-5S	Network Form 12S/5S, with prewired meter socket & test switch, no communications
VM-SMK-5S-MC	Network Form 12S/5S, with prewired meter socket & cell modem with 15 years of data
VM-SMK-9S	Commercial Form 16S/9S, with prewired 13 terminal meter socket & test switch
VM-SMK-9S-MV	Commercial Form 16S/9S, with 13 terminal socket, test switch and Cell Modem w/data

Above kits include meter socket, 2 or 3 split core CT's and meter. The first Form number is the Form of the service to be sub-metered. The second Form number is the type of meter to do the sub-metering.

Cat M1 Modem Meters Sold Separately and come with 15 years of wireless data



- VM-2LUU1P** Form 2S, 120—480 Volt, 3 Wire Class 200
- VM-2LUU2P** same as above with 200 amp disconnect switch
- VM-2MUU1P** Form 2S, 120—480 volts, 3 wire Class 320
- VM-3NUU1P** Form 3S, 120—480 volts, 2 Wire, Class 20
- VM-4NUU1P** Form 4S, 120—480 volts, 3 wire, Class 20
- VM-9NUU1P** Form 9S, 120—480 volts, 4 wire, Class 20
- VM-MLUU1P** Form 12S, 120—480 Volts, 3 Wire Network, Class 200
- VM-MLUU2P** Same as above with 200 amp disconnect switch
- VM-ZLUU1P** Form 16S, 120—480 Volts, 4 Wire, Class 20
- VM-ZMUU1P** Form 16S, 120—480 Volts, 4 Wire Class 320



Kits using 9S (Commercial & Industrial Meters) will come with 3 Split Core CT's and a prewired 13 terminal meter socket. These can be used on transformer rated or self contained metering installations. Network meters will require a Form 5S meter which has 8 terminals. This will also be a prewired meter socket.



Kits include 2 or 3 split core CT's depending on the service. They are available in ratios from 200:5 to 800:5.